

Notes:

Trim source selectable:
 MPU, default, recommended
 +5 V, recommended
 +12V, optional, application of Rs required
 External source (current or voltage)

Serial Resistance options:
 4.7 Ohm / 1W
 10 Ohm / 1W
 External

Capacitor discharge pulse options:
 Rcharge = 56 Ohm or External
 Capacitors = 47uF, 22uF, 10uF, 1uF, External

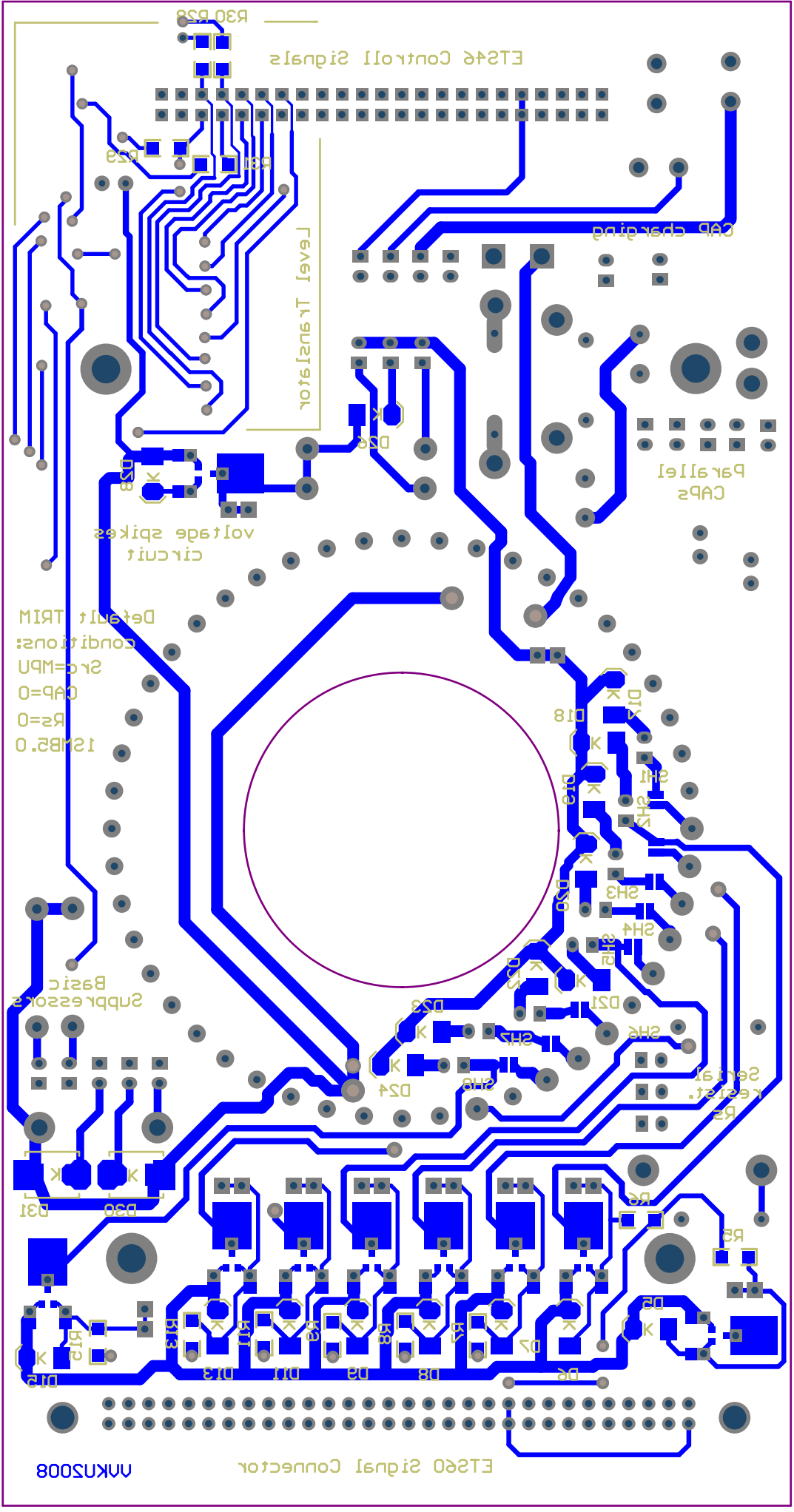
Basic Suppressor options:
 1N5333B ~3.3V
 1N5388B ~5.1V
 1SMB5.0A ~6V
 P6KE10 ~11V
 External

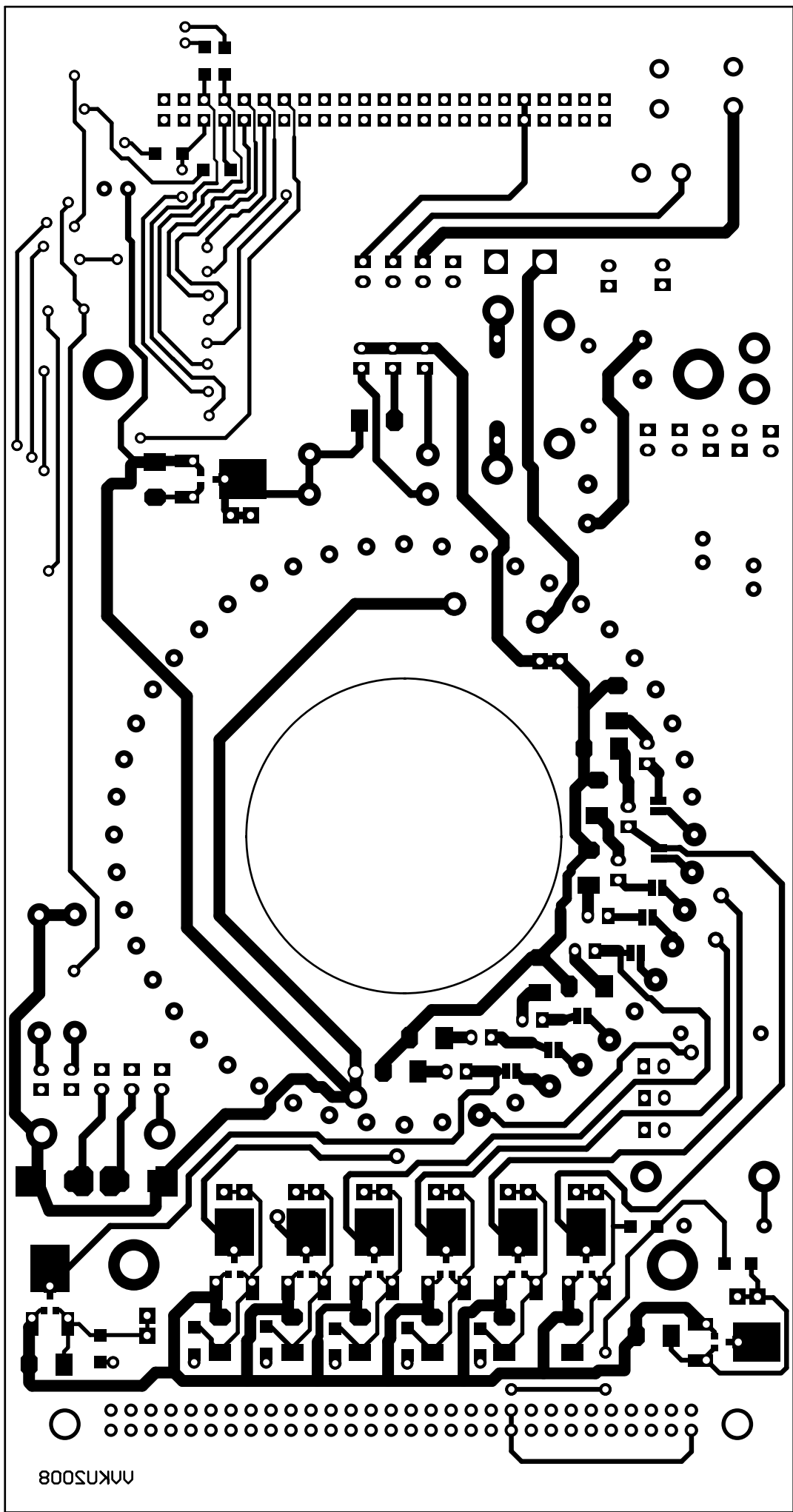
Implemented additional suppressor circuit
 to suppress voltage spikes at probe needles.
 Important for voltage pulse with high pulse currents.

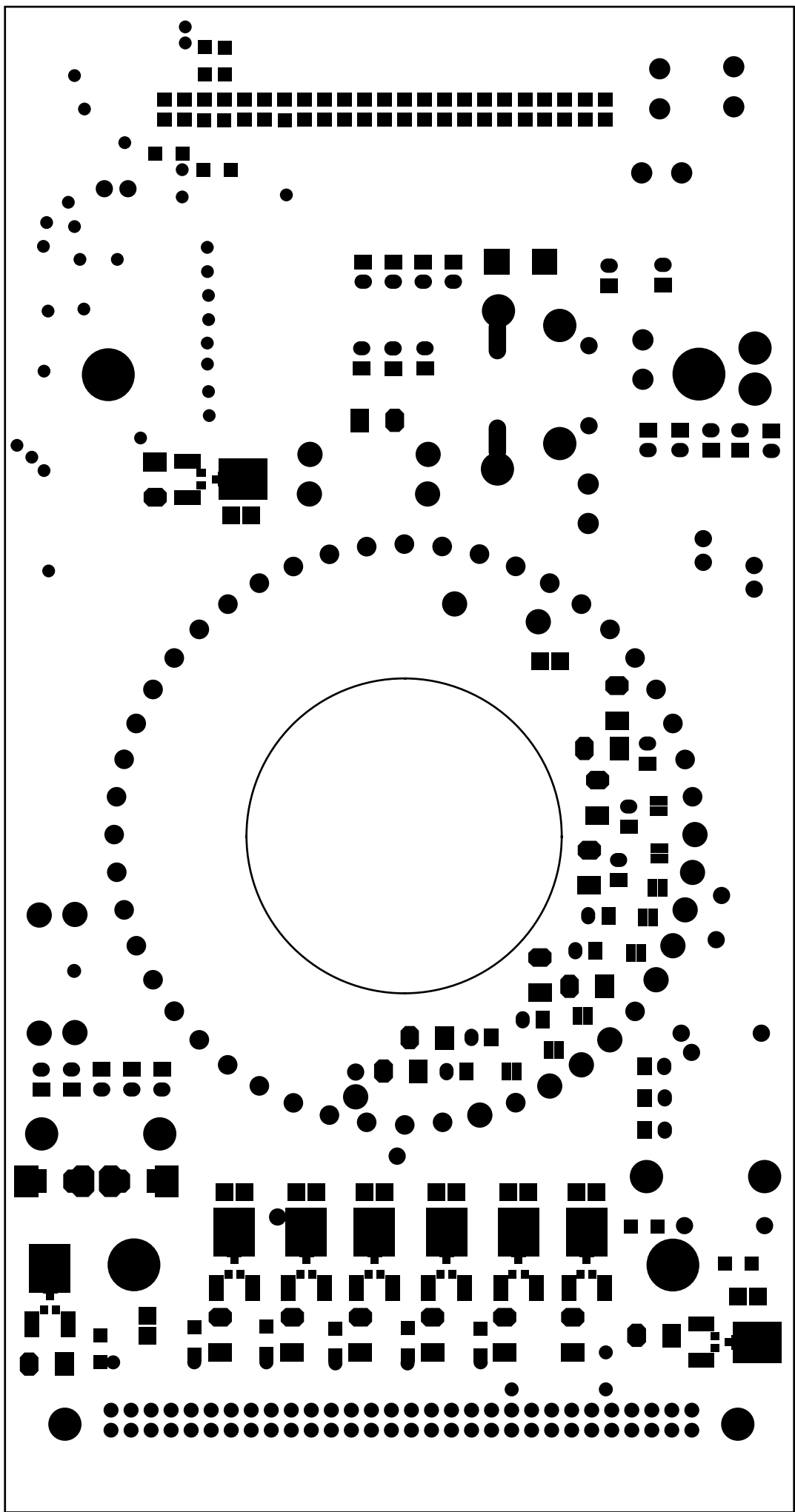
Selectable suppressors:
 - 1N5338B ~5.1 V
 - 1SMB5.0A ~6V
 - External

Schematic and layout designed by Valentin Kulikov
 in September 2008 as support FAB2 transfer based
 on prototype of trim toolkit for PS5LV.

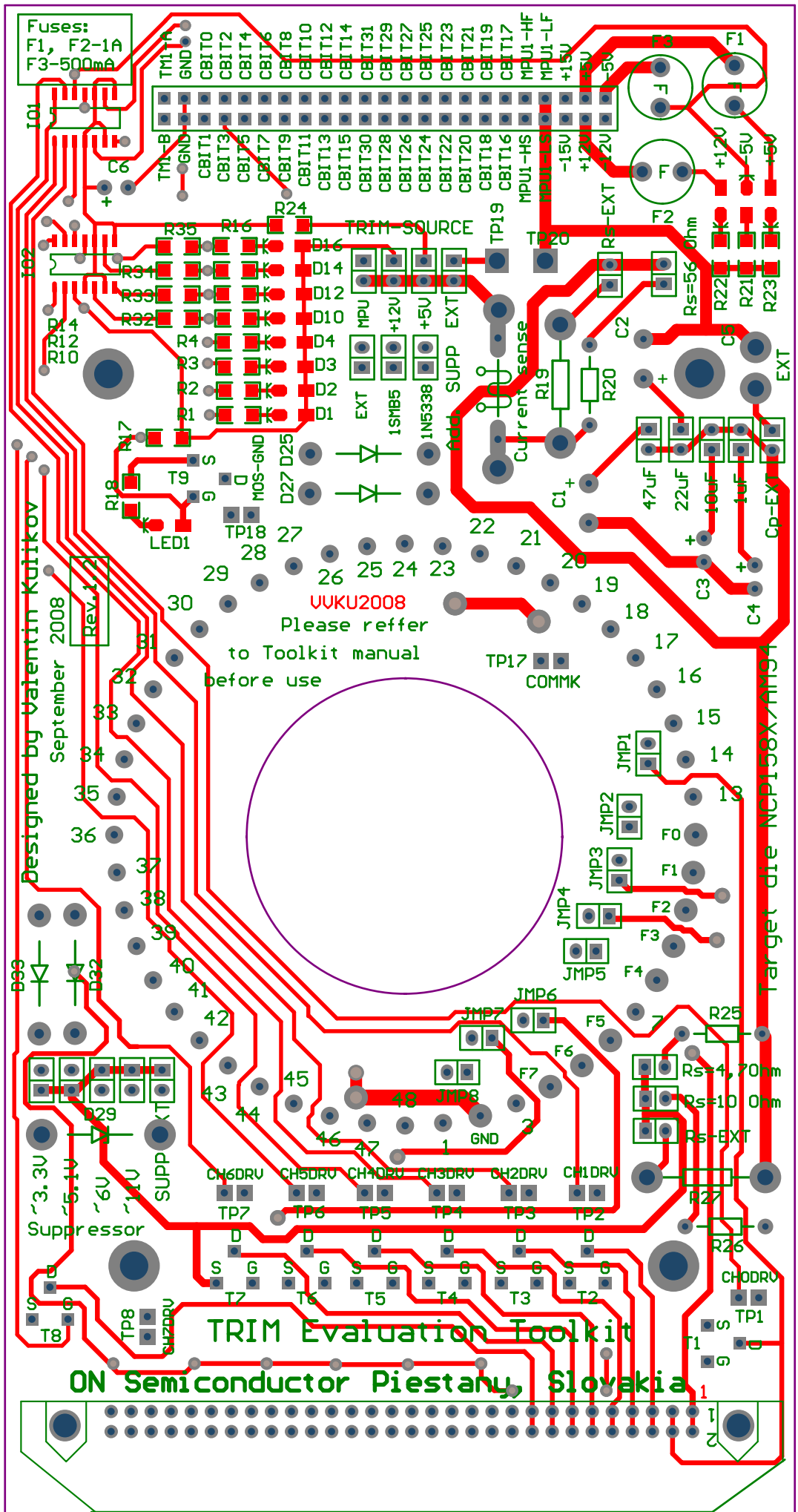
LEDs:
 1-D4, D10-D14 - RED (Trim Channels)
 LED1 - Blue (Additional suppressor circuit activation)
 LED2, 3, 4 - Green (Supply)



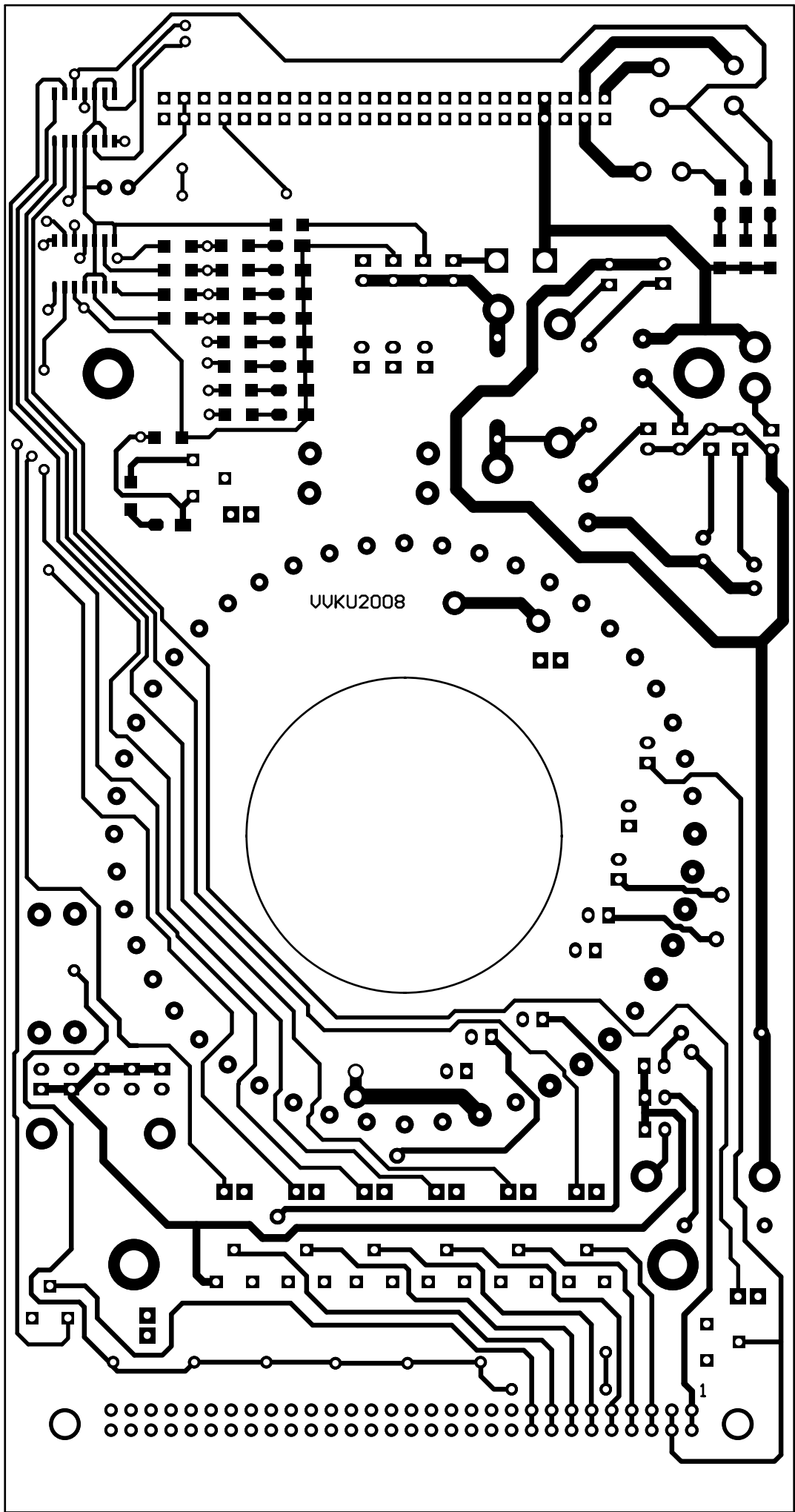


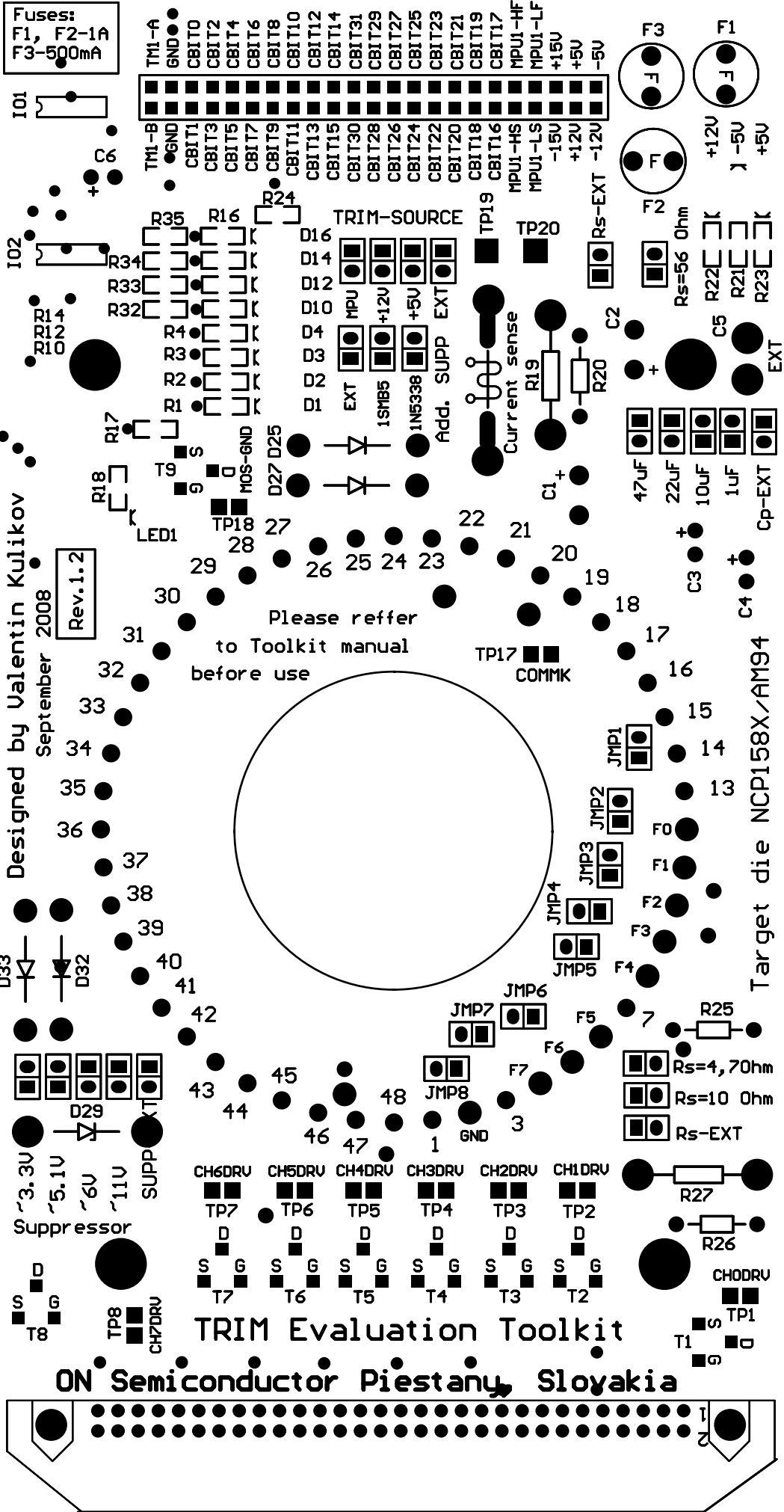


190.9826 (mm)



100.07605 (mm)





Fuses:
 F1, F2-1A
 F3-500mA

Designed by Valentin Kulikov
 September 2008

Rev.1.2

Please refer
 to Toolkit manual
 before use

Target die NCP158X/AM94

TRIM Evaluation Toolkit
ON Semiconductor Piestany, Slovakia

